



Displaying a fine string of halibut in Valdez, Alaska are: Left to right Authur Autry, guide, Greg Boid, Mickey Autry, Michael Autry and Mark Hurst. *Contributed photo*



Michael Autry displays a fine salmon with guide Greg Boid in the background. *Contributed photo*

Three generations experience the thrills of Alaska

By Michael Autry

We will never forget our trip to Alaska. My father, Mickey Autry, my grandfather, Arthur Autry, from Buffalo, Texas and I took the trip of a lifetime this summer. Arriving at Anchorage, we met with Captain Mark Hurst, my grandfather's neighbor. Mark is an airplane pilot for UPS and is in Anchorage, Alaska one to three weeks each month throughout the year. The excitement was on. All three Autrys and Mr. Hurst were more than excited to hook into a water slashing, humongous halibut or king salmon. Our first fishing experience, fishing for halibut, took place in the magnificently delightful Prince William Sound's area, located in the

Gulf of Alaska.

This unique place holds many exclusive kinds of wildlife, including many types of bear, moose, sea lions, and bald eagles. It was amazing to fish for halibut in an area with powdery snow blowing off of the mountain peaks. Although, battling a sixty-pound halibut was way more intense than I expected. Whenever I thought the battle was over the massive fish escaped my grip and dove back to the bottom of the menacing dark sea. At its end, our halibut fishing trip turned out to be an outstanding experience, we caught many halibut weighing in at around sixty pounds. After our first trip, I couldn't imagine how amazing our next trip would be.

Awaiting our salmon expedition, my grandfather had approximately 100 pounds of halibut shipped to Buffalo, Texas by Fed X. It is amazing that this halibut left Valdez, Alaska on Wednesday and arrive in Buffalo, Thursday, still frozen (no dry ice).

The second fishing experience, fishing for king salmon, started out on the raging Klutina River. This river is rugged and moves as fast as a whip. Fishing for king salmon in the Klutina River absolutely blew our minds away. We fought many King Salmon and we will never forget the battles that these incredible fish fought against us. The largest and most ferocious King Salmon we caught weighed forty-five pounds. I

cannot put into words the magnificence of catching a fish that mighty, the feeling can only be felt by experiencing it firsthand.

After our fishing trips, we visited Sarah Palin's hot dog picnic and took a few pictures of the inspirational post governor. This trip was truly a trip of a lifetime. Fishing is my passion and I couldn't have asked for a better way to celebrate my hobby. Yet, thinking back to the trip the best part was spending time with my Grandpa and Dad, two people that I love with all of my heart. Alaska is truly the last frontier and my Grandpa, my Dad, and I were lucky enough to explore that amazing state.

East Texas Plumbing Services
Commercial & Residential
30 Years Experience
Serving All Surrounding Counties
903-536-7439
130 Ruby Centerville, TX 75833
Paul Wells
Master Lic: M-18809

SHORTY'S STUMP & TREE SERVICE
"Big, Tall, Little, Small -- We Do 'Um All'"
Cut / Grind / Haul
TREE REMOVAL - STUMP GRINDING
TREE TRIMMING - LOT CLEARING
FREE ESTIMATES
INSURED FOR YOUR PROTECTION
"Family Owned & Operated"
Serving All of Tri-County
903-389-8395 Cell - **903-391-1168**

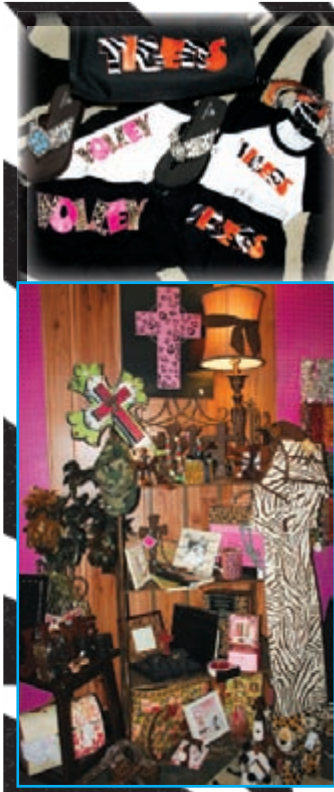
Energy Cost Comparison

Using current average energy costs for Propane vs. Electricity Per million BTUs.

Propane - \$29.12
Electricity - \$49.81

Call Leon Gas Co.
Let us explain how you can save money on your energy bill.

(936) 396-3921 or (800) 533-2605



Gypsy Dolls

Sign up for your Jewelry making classes
117 S. Commerce 903-536-6087

50-179 (Rev. 10-08-07)

Statement of Increase/Decrease
If Leon County adopts a 2009 tax rate equal to the effective tax rate of \$.501113 per \$100 of value, taxes would **increase** compared to 2008 taxes by \$ 81,101.

Schedule A - Unencumbered Fund Balances
The following estimated balances will be left in the unit's property tax accounts at the end of the fiscal year. These balances are not encumbered by a corresponding debt obligation.

Type of Property Tax Fund	Balance
All Funds	4,128,913.45

Schedule B - 2009 Debt Service
The unit plans to pay the following amounts for long-term debts that are secured by property taxes. These amounts will be paid from property tax revenues (or additional sales tax revenues, if applicable).

Description of Debt	Principal or Contract Payment to be Paid from Property Taxes	Interest to be Paid from Property Taxes	Other Amounts to be Paid	Total Payment
(expand as needed)				
Total required for 2009 debt service	\$	\$	\$	0
- Amount (if any) paid from funds listed in Schedule A	\$	\$	\$	0
- Amount (if any) paid from other resources	\$	\$	\$	0
- Excess collections last year	\$	\$	\$	0
= Total to be paid from taxes in 2009	\$	\$	\$	0
Amount added in anticipation that the unit will collect only _____ % of its taxes in 2009	\$	\$	\$	0
= Total Debt Levy	\$	\$	\$	0

Schedule C - Expected Revenue from Additional Sales Tax
(For hospital districts, cities and counties with additional sales tax to reduce property taxes)
In calculating its effective and rollback tax rates, the unit estimated that it will receive \$ 1,273,825.32 in additional sales and use tax revenues. For County: The county has excluded any amount that is or will be distributed for economic development grants from this amount of expected sales tax revenue.

Schedule D - State Criminal Justice Mandate (For Counties)
The Leon County Auditor certifies that Leon County has spent \$ 0 in the previous 12 months beginning _____, for the maintenance and operations cost of keeping inmates sentenced to the Texas Department of Criminal Justice. Leon County Sheriff has provided information on these costs, minus the state revenues received for reimbursement of such costs.

Schedule E - Transfer of Department, Function or Activity
The _____ spent \$ _____ from _____ to _____ on the _____ The _____ operates this function in all or a majority of the _____ [Second Year of Transfer: Modify schedule to show comparison of amount this year and preceding year by unit receiving the function.]

Schedule F - Enhanced Indigent Health Care Expenditures
The _____ spent \$ _____ from _____ to _____ on enhanced indigent health care at the increased minimum eligibility standards, less the amount of state assistance. For the current tax year, the amount of increase above last year's enhanced indigent health care expenditures is \$ _____

This notice contains a summary of actual effective and rollback tax rates' calculations. You can inspect a copy of the full calculations at _____ Tax Office
Name of person preparing this notice Louise Wilson
Title Tax Assessor-Collector
Date prepared August 4, 2009

LEON COUNTY COMMISSIONERS' COURT NOTICE OF MEETING AND AGENDA

THE COMMISSIONERS' COURT WILL MEET FOR A SPECIAL CALLED MEETING ON AUGUST 13TH, 2009 AT 9:30 A.M. AT THE LEON COUNTY ANNEX I COURTROOM LOCATED AT 113 W. MAIN, CENTERVILLE, TEXAS.

AGENDA AT 9:30 A.M.

1. Open meeting with prayer and pledges
2. Discuss and possibly take action on budget item(s)
3. Discuss "2009" tax rate
4. Review and discuss "2009-2010" proposed budget
5. Discuss and possibly take action on the schedules and announcement of meeting date/time to adopt "2009 - 2010" budget and "2009" tax rate
6. Public comments
7. Commissioners' open forum
8. Adjourn

Certification:

Signed and dated August 3rd, 2009

Byron Ryder, Leon County Judge

I, the undersigned County Clerk, do hereby certify that the agenda for the above named Commissioners Court is a true and correct copy, and that it was posted 72 hours preceding the schedule of this meeting.

Carla McEachern, County Clerk

Pursuant to the authority under Government Code Sections 551.071 - 551.088, the Commissioners Court may convene a closed session to discuss any of the above agenda items. Immediately before any closed session, the specific section or sections of Government Code, Section 551 that provides statutory authority will be announced.